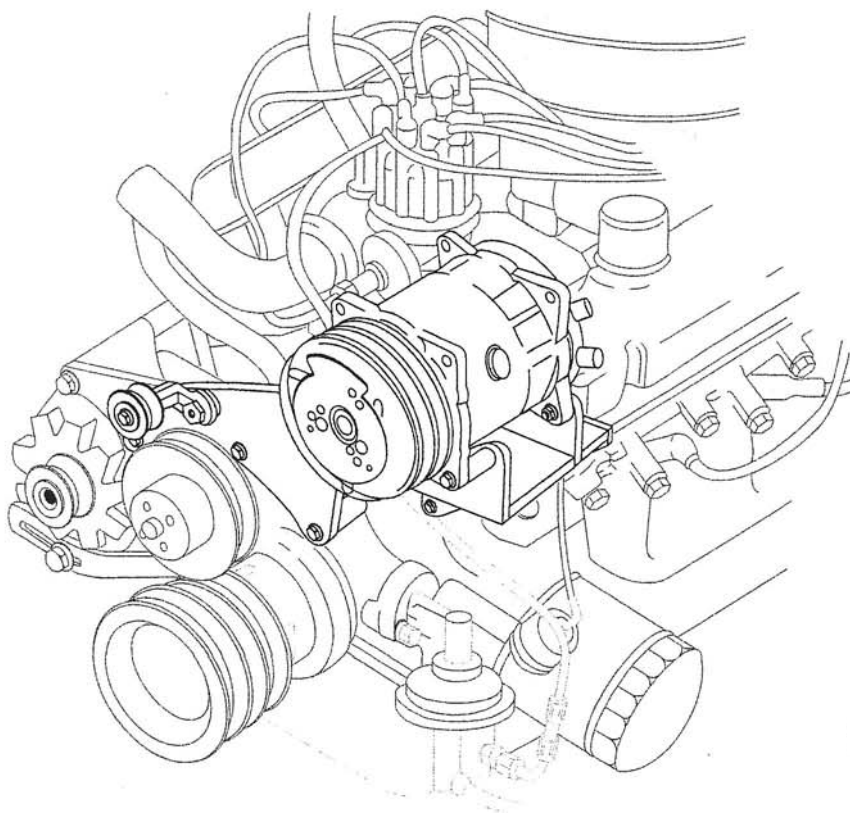




# 289 FORD

## COMPRESSOR BRACKET

w/ & w/o **POWER STEERING**



**131110**

18865 GOLL ST. - SAN ANTONIO, TX. - 78266 ph.210-654-7171 - fax 210-654-3113



## ***Table of Contents***

**PAGES**

1. COVER
2. TABLE OF CONTENTS
3. PACKING LIST
4. INSTALLATION INSTRUCTIONS
5. IDLER & COMPRESSOR BRACKET INSTALLATION
6. COMPRESSOR INSTALLATION
7. BRACKET KIT PACKING LIST



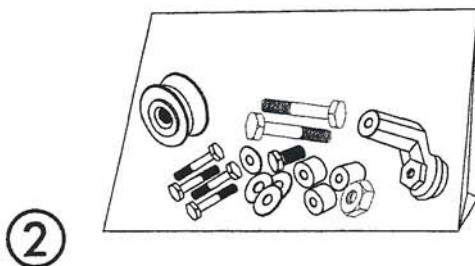
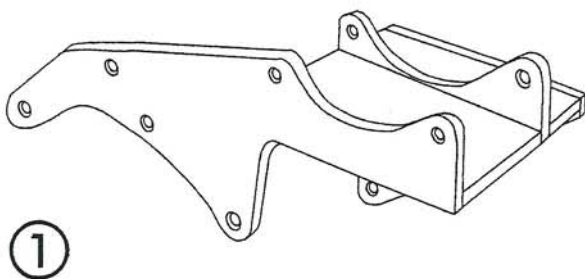
## 289 FORD COMPRESSOR BRACKET

### 289 FORD COMPRESSOR BRACKET

BRACKET KIT  
131110

No.	QTY.	PART No.	DESCRIPTION
1.	1	13601-SFA	289 FORD COMP. MOUNTING BRKT.
2.	1	19101-HFA	HARDWARE KIT

**\*\* BEFORE BEGINNING INSTALLATION OPEN ALL PACKAGES AND CHECK CONTENTS OF SHIPMENT. PLEASE REPORT ANY SHORTAGES DIRECTLY TO VINTAGE AIR WITHIN 15 DAYS. AFTER 15 DAYS, VINTAGE AIR WILL NOT BE RESPONSIBLE FOR MISSING OR DAMAGED ITEMS.**





## INSTALLATION INSTRUCTIONS

BEFORE INSTALLATION, CHECK FOR PROPER OPERATION OF ALL COMPONENTS (RADIO, LIGHTS, WIPERS, ETC.). STUDY THE INSTRUCTIONS, ILLUSTRATIONS AND DIAGRAMS. FOR EASE OF INSTALLATION CHECK OFF (✓) EACH PROCEDURE PRIOR TO MOVING ON TO NEXT STEP.

### STEP(S)

- ☐ 1. REMOVE O.E.M ENGINE FAN, FAN PULLEY AND BELTS. (RETAIN)

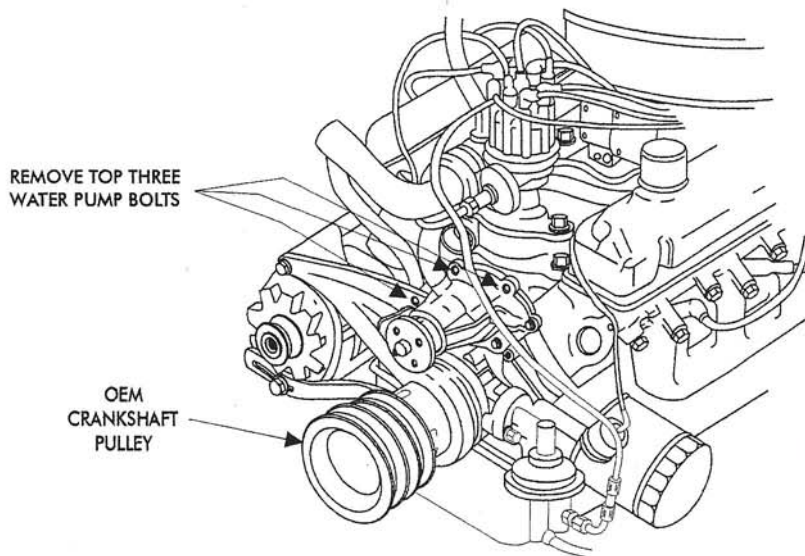


TO EASE INSTALLATION, MAKE SURE THE ENGINE IS NOT HOT AND RELEASE THE PRESSURE ON THE RADIATOR CAP.

\* PLACE A DRAIN PAN UNDER THE VEHICLE AND REMOVE THE UPPER RADIATOR HOSE.

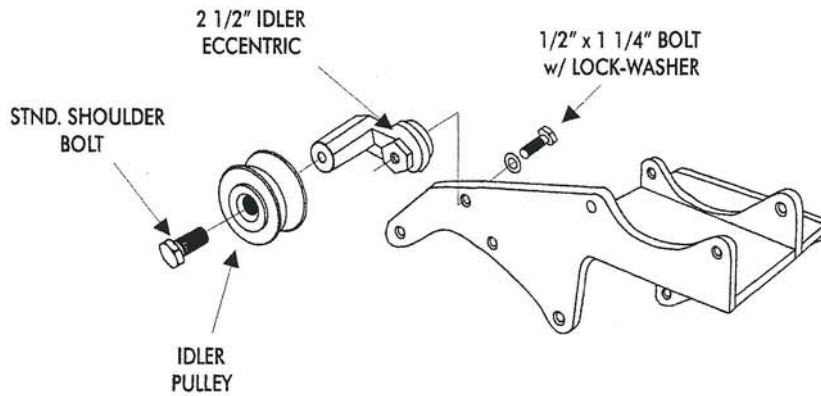
### COMPRESSOR MOUNTING BRACKET INSTALLATION

- ☐ 4. REMOVE THE TOP THREE WATER PUMP MOUNTING BOLTS (DISCARD). **SEE FIGURE 1 BELOW**
- ☐ 5. LOOSELY ATTACH IDLER ASSEMBLY TO THE COMPRESSOR MOUNTING BRACKET. **SEE FIGURE 2 PAGE 5**
- ☐ 6. ATTACH COMPRESSOR MOUNTING BRACKET TO THE ENGINE USING, (3) 5/16" x 2 3/4" BOLTS, LOCK-WASHERS, AND (2) SPACERS. (NOTE: THE LEFT MOUNTING BOLT WITH WASHER WILL GO THROUGH THE COMPRESSOR BRACKET AND ALTERNATOR BRACKET. THE TOP CENTER MOUNTING BOLT WITH WASHER WILL GO THROUGH THE COMPRESSOR BRACKET WITH A 1 1/4" SPACER BETWEEN THE COMPRESSOR BRACKET AND THE WATER PUMP. NOTE: THE RIGHT MOUNTING BOLT WITH WASHER WILL GO THROUGH THE COMPRESSOR BRACKET WITH A 1" SPACER (w/o POWER STEERING) OR A 13/16" SPACER (w/ POWER STEERING) WILL GO BETWEEN THE COMPRESSOR BRACKET AND WATER PUMP. SECURE THE REAR PORTION OF THE COMPRESSOR MOUNTING BRACKET TO THE HEAD USING A 3/8" x 1" BOLT, WASHER, AND SPACER. THE 1/4" SPACER WILL GO BETWEEN THE COMPRESSOR MOUNTING BRACKET AND THE HEAD. **SEE FIGURE 3 PAGE 5.**



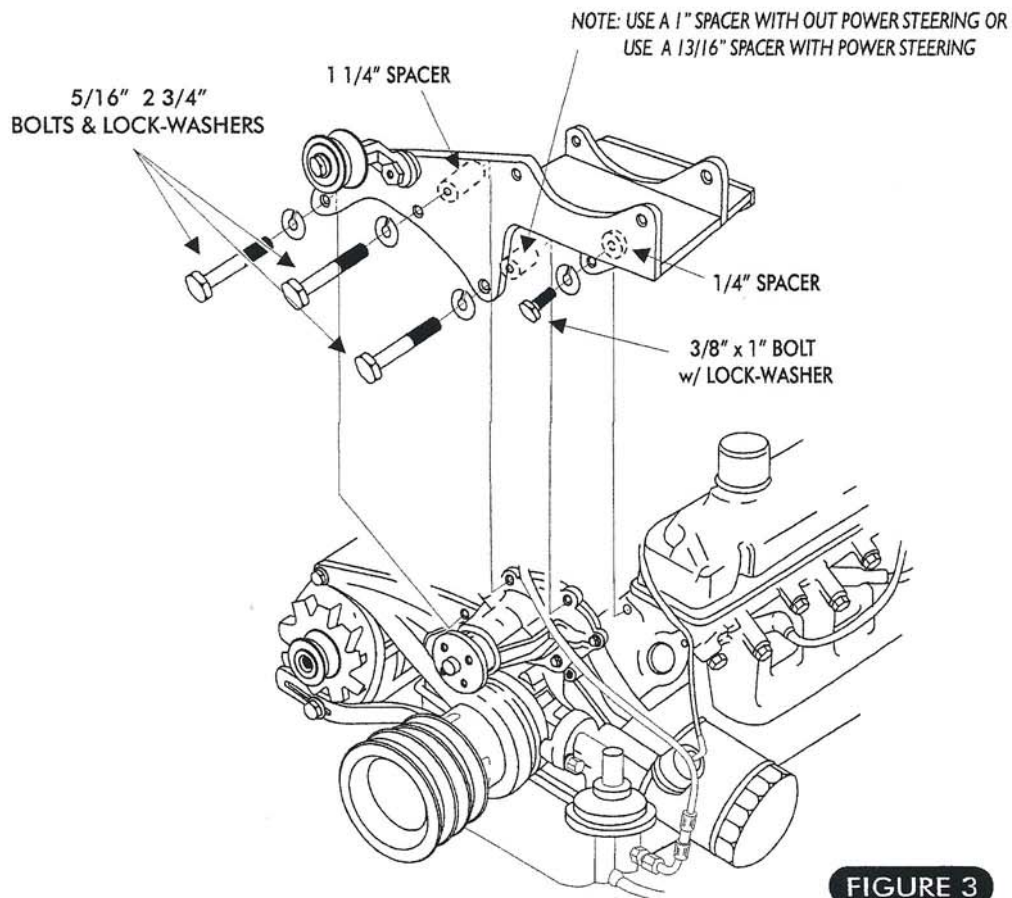
**FIGURE 1**

**IDLER ASSEMBLY INSTALLATION**



**FIGURE 2**

**COMPRESSOR MOUNTING BRACKET INSTALLATION**

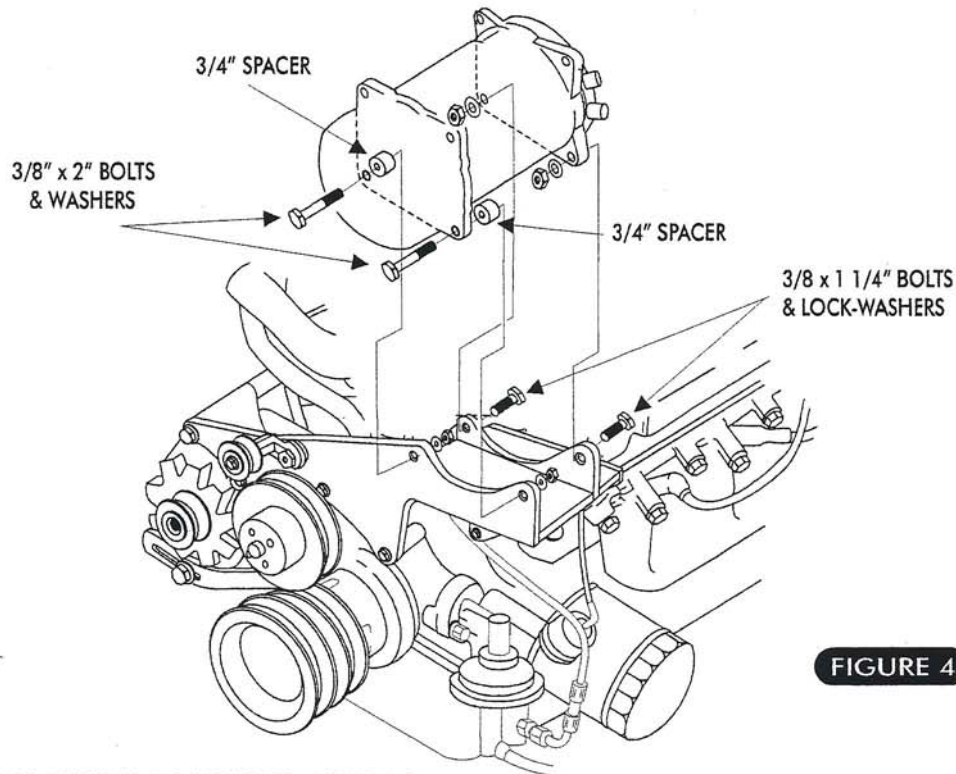


**FIGURE 3**



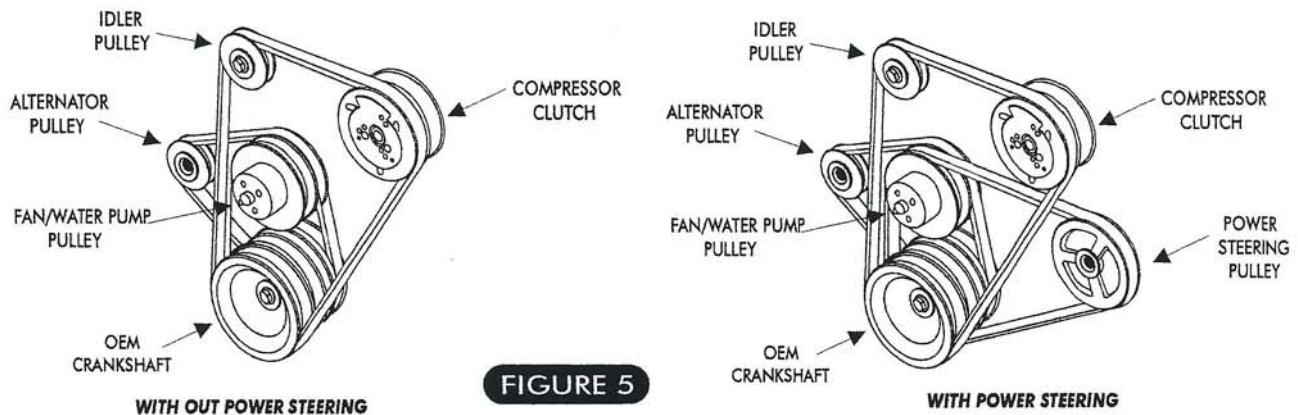
## COMPRESSOR INSTALLATION

- ☐ 7. ATTACH THE COMPRESSOR TO MOUNTING BRACKET; USING (2) 3/8" x 2" BOLTS, WASHERS, 3/4" SPACERS, AND NUTS TO FRONT UPRIGHT OF COMPRESSOR MOUNTING BRACKET. USING (2) 3/8" x 1 1/4" BOLTS, WASHERS, AND NUTS TO ATTACH THE REAR OF THE COMPRESSOR TO REAR UPRIGHT OF COMPRESSOR MOUNTING BRACKET. **SEE FIGURE 4 BELOW**



**FIGURE 4**

- ☐ 8. RE-INSTALL ENGINE FAN PULLEY AND FAN.
- ☐ 9. INSTALL BELTS AS SHOWN IN **FIGURE 5 BELOW**. ADJUST TO PROPER TENSION AND TIGHTEN ALL BOLTS.



**FIGURE 5**

- ☐ 10. RE-INSTALL UPPER RADIATOR HOSE. MAKE SURE TO CHECK FOR PROPER CLEARANCE BETWEEN THE COMPRESSOR, COMPRESSOR CLUTCH, MOUNTING BRACKET AND ALL HEATER HOSES AND OIL LINES. FILL UP THE RADIATOR TO REPLACE ANY FLUIDS LOST DURING THE INSTALLATION PROCESS.





## 289 FORD COMPRESSOR BRACKET

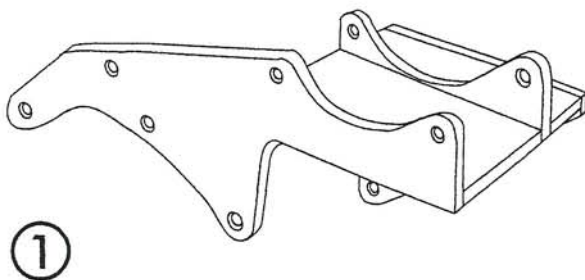
### 289 FORD COMPRESSOR BRACKET

#### BRACKET KIT

131110

No.	QTY.	PART No.	DESCRIPTION	CHECK LIST
1.	1	13601-SFA	289 FORD COMP. MOUNTING BRKT.	_____
2.	1	19101-HFA	HARDWARE KIT	_____

CHECKED BY: \_\_\_\_\_  
PACKED BY: \_\_\_\_\_  
DATE: \_\_\_\_\_



②

